

## Assuming the Mantle

by Doug Rice

At the recent Annual Members Meeting our senior board member retired. When Dr. Stephen Underwood stepped down from his service at Stewards Foundation some big shoes were left to be filled. Trustees are first and foremost servant-leaders. Volunteering one's time in support of Stewards Foundation's mission requires a servant's heart. The kind of godly character that motivates one to seek after the Lord's will is essential to lead Stewards Foundation. Challenging issues arise in the work of Stewards Foundation, but these servant-leaders only move forward according to the Lord's direction.

Our newly elected Trustee is Don Salter from Phoenix, Arizona. Don has willingly agreed to assume the mantle of responsibility in serving alongside the other six Trustees. I trust that Don's bio below will be informative and serve as a reminder to pray for him in his new responsibility with Stewards Foundation.

*"He trusted Christ as his Savior on Friday the 13th of February"*

Don was born July 19, 1941, in Keokuk, Iowa because there was no hospital in the little town of Bloomfield, Iowa where his parents lived. Approximately four years later, his grandmother, Rilla Lemmon, was saved during the "Lord's Supper" at Ottumwa Bible Chapel in Ottumwa, Iowa. Don's parents were both saved soon after, and attended that assembly until they moved to Anoka, Minnesota when Don was eight year old.

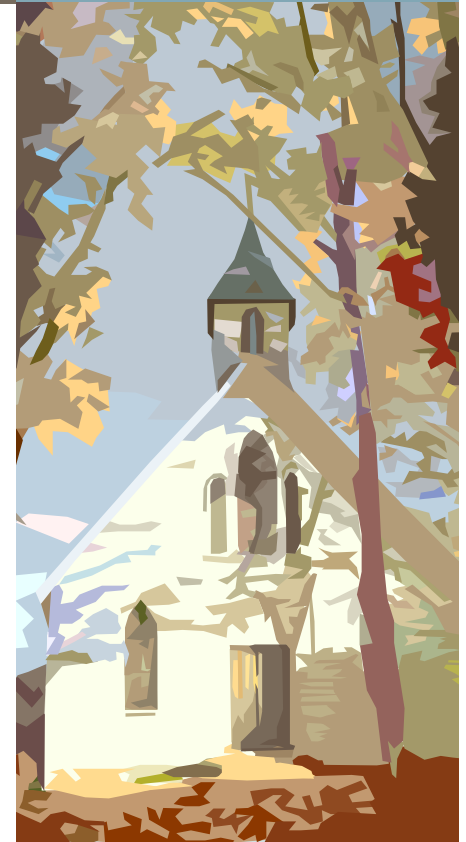


Don Salter  
Trustee

The family attended Northeast Bible Chapel in Minneapolis, Minnesota. Don can remember being under conviction at the age of five, but did not get saved until he was nine years old. He trusted Christ as his Savior on "Friday the Thirteenth" of February 1951; that date has been a favorite ever since.

After graduating from Anoka High School in 1959, Don began his studies at the University of Minnesota in Architectural Engineering. After moving to Scottsdale, Arizona in 1963, he changed his major to Civil Engineering at Arizona State University. The change to Civil Engineering was made because Don found work as a junior engineer / draftsman at a moderate sized engineering company in Phoenix. After working as an engineer for this company for over 14 years, Don was sought out by a major home building company. His job with this company was to oversee their land development for all of the subdivisions they were building in the metropolitan Phoenix area. A year later, Don was

*Continued on page 2*



## INSIDE THIS ISSUE

• **Page 1:**  
*Assuming the Mantle*

• **Page 2:**  
*Assembly Testimonial*

• **Page 3:**  
*Commended Worker Testimonial*

# *I CORINTHIANS 4:2, "IT IS REQUIRED*

Continued from Page 1

made Regional Development Manager over all of their developments in Tucson and Las Vegas, Nevada in addition to development in Metro-Phoenix. In 1980, Don went into business for himself and has been developing real estate ever since.

In 1962, Don married Mary Louise Walkup, the farm girl whom God had chosen for him. Don and Mary decided to move from Iowa to Scottsdale, Arizona in late 1963. From 1963 to 1966, God blessed them with four daughters, Brenda LaRae being the first and Tamera Donelle being the fourth. In between, they had a set of premature identical twins, Dawn and Fawn, whom the Lord immediately chose to take to heaven to be with Himself. Brenda has since gone home to be with her Lord and Savior, succumbing to the same strain of ovarian cancer that took her mother, Mary's life nine years ago. Don has six grandchildren, one of which is married, and three great grandchildren.

For the first five years after marrying and moving to Arizona, Don and Mary found fellowship with the saints at Sunnyslope Gospel Hall. In 1968, they began meeting with the saints at Palms Gospel Chapel in north Phoenix, later becoming Palms Bible Fellowship. Initially, they both taught Sunday School and then became very active in camp work with Southwest Bible Camp (SWBC). Mary was head cook for many camps and retreats, and became director of the Women's Retreat for many years. Don served on the Board of Directors for SWBC for nearly 20 years, as well as directing, speaking and teaching at camps, retreats and conferences. Don has also served in the oversight at Palms Bible Fellowship for many years, standing ready to serve his Master and King wherever and whenever He may call.

## ASSEMBLY TESTIMONIAL

### Mesquite Brethren Assembly

Mesquite Brethren Assembly is located in Mesquite, Texas, in the eastern part of the Dallas-Fort Worth metroplex, one of the fastest growing areas in the country. For many years, those living in this area travelled long distances to attend church. The Lord placed a burden and concern upon the heart of several brethren to begin an assembly in the eastern part of the metroplex. In 2002, about 10 families began meeting in a rented hall at an inn located in Mesquite. For several years, they continued assembling at this facility for Sunday worship. However, Wednesday and Saturday prayer meetings and Bible studies had to be conducted in the homes of various members. The Lord added more families to the assembly, and by 2006, regular attendance numbered 50-55. It became apparent that the rented space at the inn was inadequate, not only



for Sunday worship, but also to conduct Sunday School classes for the large number of children who regularly attended. It was at this time that the assembly began looking for a more appropriate and permanent meeting place.

Initially, it was thought that an existing building in the area might be appropriate; but no suitable options were found. By God's grace, an appropriate piece of land was located in an ideal area of the city of Mesquite. The site was easily accessible and close to both business and residential areas. The assembly was able to purchase the land and secure a loan to finance the chapel. Through much prayer, sacrifice and commitment of the believers in the assembly, the construction of the 2,000 square foot building was completed in the fall of 2007.

*"But we preach Christ crucified..."  
1 Corinthians 1:23*

Now that the believers had a permanent place to gather together, the Wednesday prayer meetings and Saturday Bible studies were all conducted in the new building. The original building loan had a high interest rate so the believers sought out refinancing options. In 2008, a new loan was secured from Stewards Foundation. The new building had two rooms that were used for Sunday School classes, but the other classes had to meet in the main worship hall. In addition, times of fellowship that included meals necessitated eating in the worship hall. So the assembly decided to look into adding a fellowship hall to the existing building. With additional financing from Stewards Foundation, and the help of a local Christian contractor, the new fellowship hall was completed in 2012. The new hall included a kitchen and sufficient space for meals and fellowship, including special programs and receptions, as well as additional space for Sunday School classes.

Continued from Page 2

Over the years, the assembly has been actively involved in various ministries, including special conferences and Bible Studies with noted speakers, Vacation Bible School, community outreaches, as well as participation in various regional and national conferences including the Southwest Brethren Conference, FIBA, and the Indiana Conference. The youth of the assembly are also actively engaged in various music ministries.

The assembly faithful now numbers around 60. Each Lord’s day, Sunday School begins at 9:00 AM, followed by worship, including the Lord’s Supper and word ministry, closing by 12:30 PM. Weekly meetings include Wednesday night prayer meeting at 7:00 PM and Saturday night Bible Study at 7:00 PM. In addition, the assembly holds a monthly special Sister’s meeting and a monthly Youth and Family night.

The Mesquite Brethren Assembly is a group of believers who meet in the name of the Lord Jesus Christ for teaching, fellowship, breaking of bread, and prayer. We are believers in the Lord Jesus who desire to follow New Testament principles of life, fellowship, worship, ministry and mission. It is our desire to remain faithful to Him who called us until His return. “But we preach Christ crucified...” 1 Corinthians 1:23

## COMMENDED WORKERS

### Lee and Sharon Sandifer

I (Lee) was raised in a Christian home and taught the Bible. My family was active in church, but I was not saved until the age of 15. While in High School, I was involved in youth group, mission trips and evangelism. During this time it seemed that the Lord was leading me into the ministry. In my senior year, I was asked to be the Minister of Youth and Music at a small church. After graduating, I went to Southeastern Louisiana University (SLU) to major in music.

While in college, I met Sharon Kiviah in a Sunday School class. She was earning her Masters at SLU. We became good friends, working on campus in evangelism, a Christian newspaper, and Bible study. Sharon was saved when she was eight and was active in church despite the circumstance of her home where her father being a drunkard caused instability. After earning her B.A. in Education, she taught in public schools.

When the church pianist where I

was Music Minister moved, I asked Sharon to take her place. She accepted and was a great help. The Lord knitted our hearts together, and we were married in June 1982. After serving at the church where I began, we moved to a church closer to the university. I was the Minister of Education, and we were both involved in outreach seeing people saved. After about a year, we left due to issues in the leadership that were not honoring to the Lord. Being disillusioned, we also left the ministry and started studying the Bible to find what it taught concerning the church.

*“We give thanks that the Lord has seen fit to use us by His grace”*

I changed majors to Mass Communications. After graduating, we ended up back in Slidell, LA where I worked on the air at a New Orleans radio station. As we continued our Bible study, the Lord showed us several New Testament church truths: the plurality of leadership, the saints should be equipped to do the work of the ministry, the women should wear a head covering, offerings should be taken only from believers, and the Lord’s Supper should be celebrated weekly. But we did not know a church that practiced these principals so prayed that the Lord would lead us.

We became involved in a church where we taught marriage groups, and led a “shepherd” group. The church had a Biblical Counseling Center, and we were trained to help. The director was the instructor, but when he could not be there Bob Brown from Slidell Bible Chapel substituted. Bob mentioned some of the things the Lord showed us and after talking with him he invited us to visit the assembly.

The teaching at the Family Bible Hour was good, and seeing the women with their heads covered was a joy for Sharon. Over lunch, Bob asked for our testimonies. Hearing that we were believers, he invited us to the Lord’s Supper. Remembering the Lord was wonderful, making perfect sense how it could be celebrated weekly.

Thankfully, the Lord led us to Slidell Bible Chapel in November of 1992. Bob disciplined me and I began to teach and preach. We enjoyed serving together in Awana Clubs and



# Psalms 126:3, “The LORD hath done great things for us; whereof we are glad”

Continued from page 3

being active in men’s and women’s Bible studies.

In 1995, I left radio work. I had out of town job offers, but we agreed that the Lord had brought us to Slidell Bible Chapel, so we stayed. I got a degree in biomedical engineering and found work with a biomedical firm. Traveling for work gave me the opportunity to visit New Testament assemblies around the country. What a blessing it was to meet like-minded saints.

In 2005, Hurricane Katrina flooded our house with 7 feet of water. By the Lord’s provision through His saints, our house was restored. Sharing the gospel with neighbors and strangers as we helped them during the recovery resulted in souls being saved. During this time the Lord began leading me away from secular employment, and I was pointed out as an elder in the assembly.

In July of 2007, I left my job for more time to minister and teach God’s Word. Since then, I have served as a teacher, assistant principal, and now principal in Slidell Christian Academy. Sharon serves alongside me, ministering in teaching, administration, hospitality,

and encouragement.

In 2010, the saints of Slidell Bible Chapel, Lake Park (Belle Chasse) LA, and Central Bible Chapel, Millbrook, AL commended us to a ministry of building up the assembly at Slidell Bible Chapel, and other assemblies throughout the Deep South and beyond, as the Lord leads. It has been our privilege to minister God’s Word to assemblies in Louisiana, Alabama, and Georgia.

When we see how the Lord provides for our needs, and gives us opportunity to serve Him and His people, we are grateful. Through the Stewards Foundation’s Health Care Assistance Program, the Lord has provided for all of our needed prescriptions and wellness visits. We thank the Lord for the ministry of Stewards Foundation.

We give thanks that the Lord has seen fit to use us by His grace. So much more lies ahead. What a blessing and privilege it is to be a part of the body of Christ and to serve Him.



1420 W. Mockingbird Ln.  
Suite 410  
Dallas, Texas 75247-4932  
Phone: 972-726-6550

[www.stewardsfoundation.org](http://www.stewardsfoundation.org)

PLEASE  
PLACE  
STAMP  
HERE